

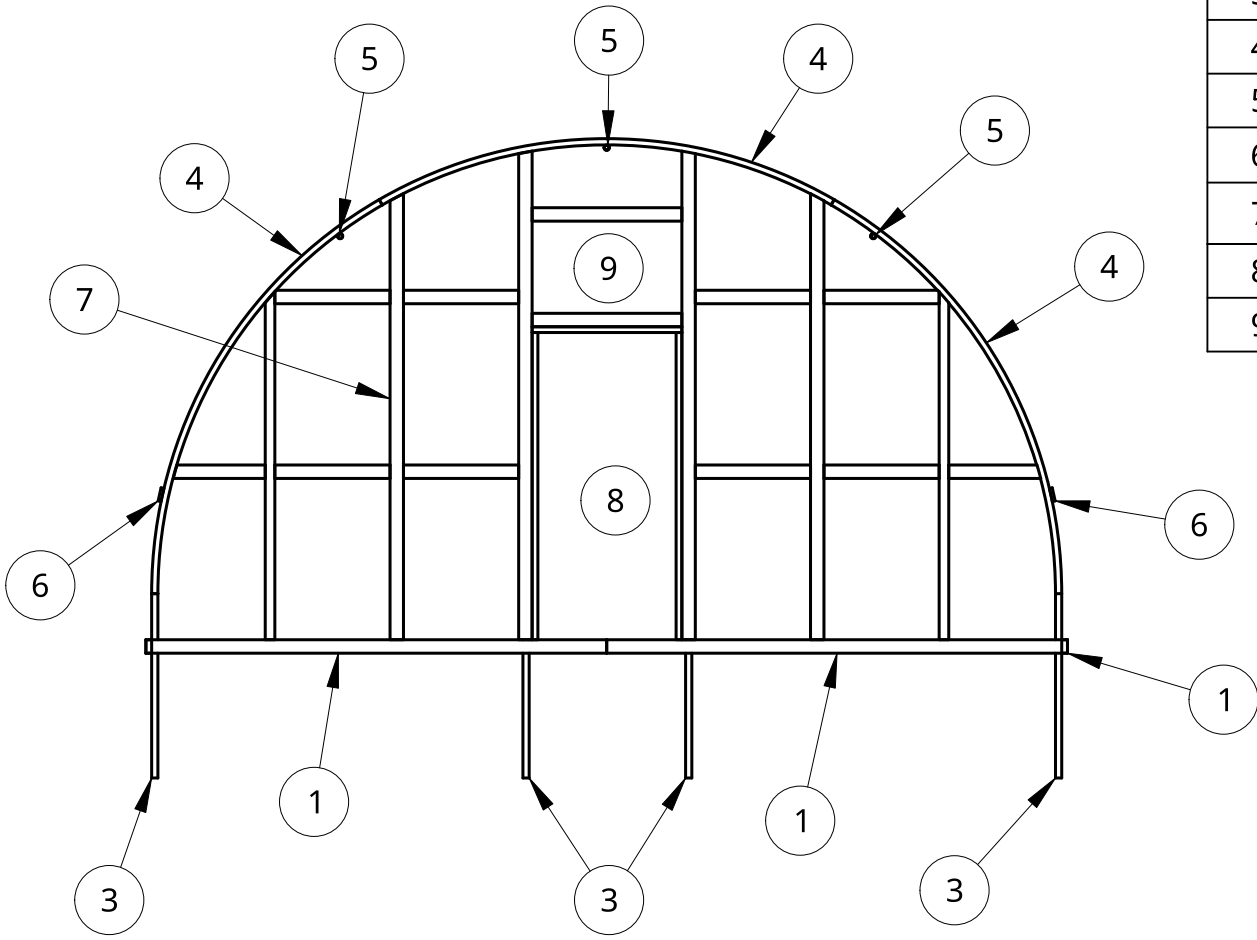
2

1

Item	Quantity	Description
1	4	2x4 Pressure Treated Wood
2	4	2x4 Pressure Treated Wood
3	18	1.625" x 4' Post
4	21	1.375" x 10.5' Rib
5	6	1.375" OD Purlin
6	4	1x4 Roll-up Board
7	2	Framing - Wood 2x4s
8	2	36"x80" Door
9	2	Vent

B

B



A

A

WIND LOAD - 65 MPH
 SNOW LOAD - 30 PSF

UNLESS OTHERWISE SPECIFIED,
 DIMENSIONS ARE IN INCHES

.XX = ±.0-
 .XXX = ±.00-
 .XXXX = ±.000-

ANGULAR = ± °
 FRACTIONAL = ±

SURFACE FINISH ✓

DO NOT SCALE DRAWING

BREAK ALL SHARP EDGES AND
 REMOVE BURRS

THIRD ANGLE PROJECTION

	NAME	DATE
DRAWN	KEVIN ROBERTS	02/06/2021
CHECKED		
APPROVED	E. Roberts	
MATERIAL	Galvanized Steel	FINISH

Roberts Ranch Hoophouses			
TITLE			
20' Wide Hoophouse End View & BOM			
SIZE	DWG NO.	REV.	
A	H20-1	A	
SCALE	WEIGHT	SHEET	
1:50		1 of 5	

2

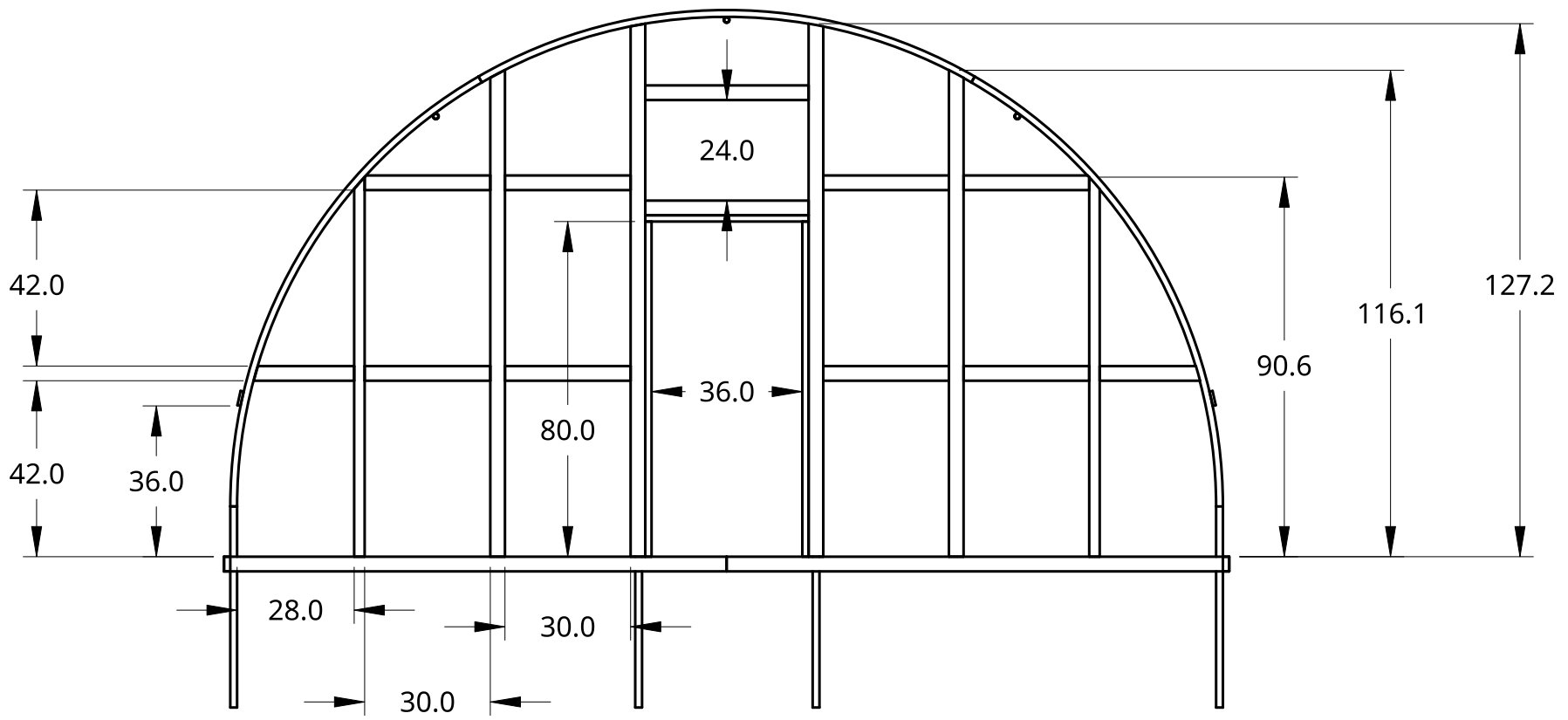
1

2

1

B

B



A

A

WIND LOAD - 65 MPH
 SNOW LOAD - 30 PSF

UNLESS OTHERWISE SPECIFIED, DIMENSIONS ARE IN INCHES .XX = ±.0- .XXX = ±.00- .XXXX = ±.000-		NAME	DATE	Roberts Ranch Hoophouses	
ANGULAR = ± ° FRACTIONAL = ±	DRAWN	KEVIN ROBERTS	02/06/2021	TITLE 20' Wide Hoophouse Dimensioned End View	
SURFACE FINISH ✓	CHECKED				
DO NOT SCALE DRAWING	APPROVED	E. Roberts			
BREAK ALL SHARP EDGES AND REMOVE BURRS	MATERIAL	FINISH		SIZE	DWG NO.
THIRD ANGLE PROJECTION	Galvanized Steel			A	H24-2
				SCALE	WEIGHT
				1:40	
				SHEET	2 of 5
				REV.	A

2

1

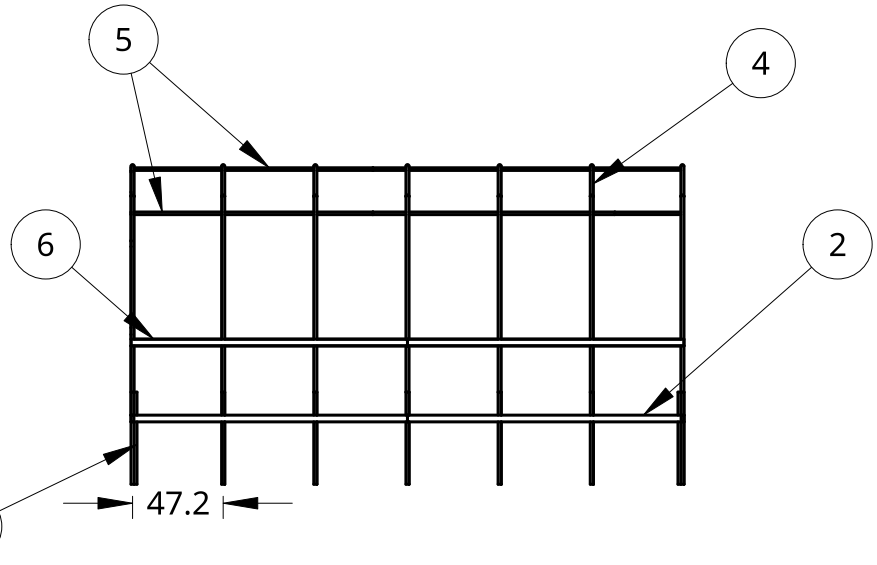
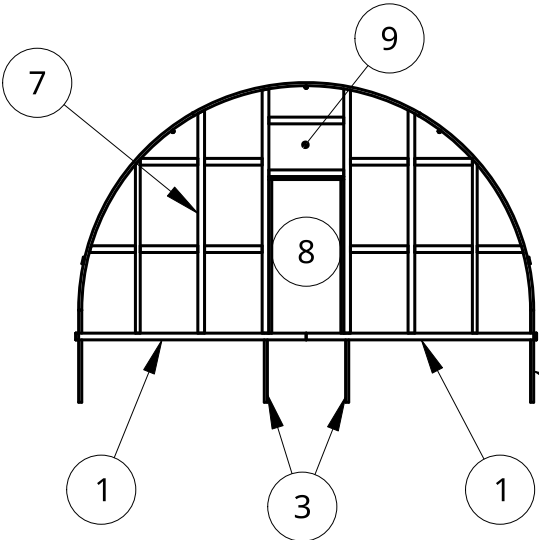
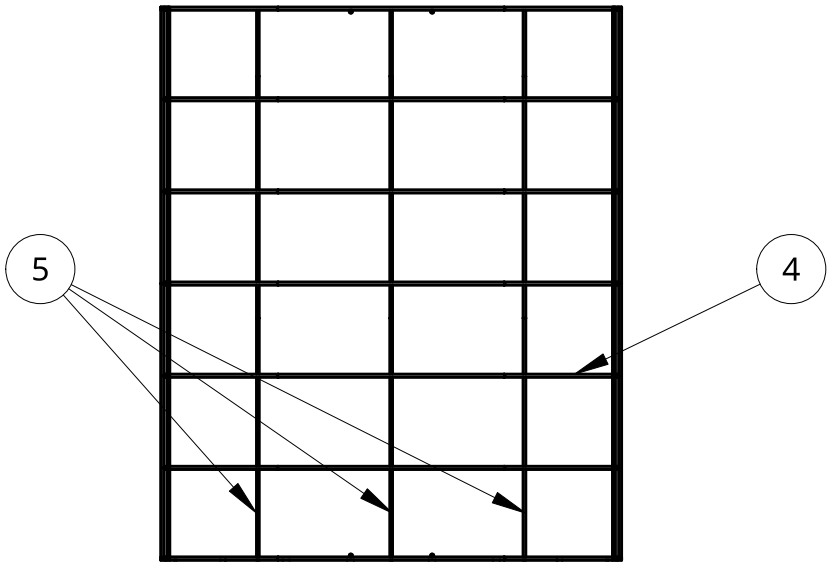
2

1

Item	Quantity	Description
1	4	2x4 Pressure Treated Wood
2	4	2x4 Pressure Treated Wood
3	18	1.625" x 4' Post
4	21	1.375" x 10.5' Rib
5	6	1.375" OD Purlin
6	4	1x4 Roll-up Board
7	2	Framing - Wood 2x4s
8	2	36"x80" Door
9	2	Vent

B

B



A

A

WIND LOAD - 65 MPH
 SNOW LOAD - 30 PSF

UNLESS OTHERWISE SPECIFIED,
 DIMENSIONS ARE IN INCHES
 .XX = ±.0-
 .XXX = ±.00-
 .XXXX = ±.000-
 SURFACE FINISH ✓
 DO NOT SCALE DRAWING
 BREAK ALL SHARP EDGES AND
 REMOVE BURRS
 THIRD ANGLE PROJECTION

	NAME	DATE
DRAWN	KEVIN ROBERTS	02/06/2021
CHECKED		
APPROVED		
MATERIAL	FINISH	
Galvanized Steel		

Roberts Ranch Hoophouses

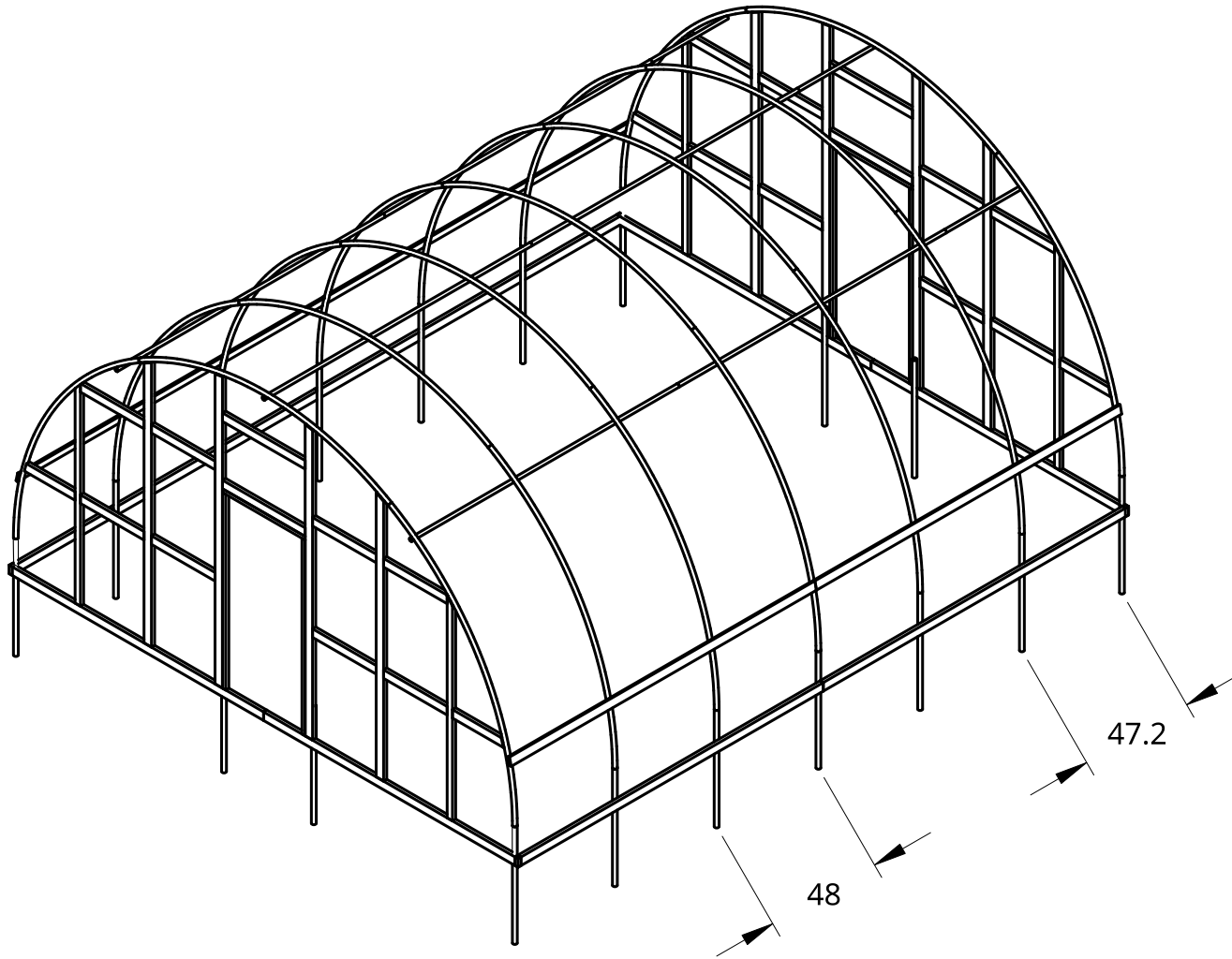
TITLE
 20' Wide Hoophouse Projected
 Views & BOM

SIZE **A** DWG NO. **H20-3** REV. **A**

SCALE 1:100 WEIGHT SHEET 3 of 5

2

1



WIND LOAD - 65 MPH
 SNOW LOAD - 30 PSF

UNLESS OTHERWISE SPECIFIED, DIMENSIONS ARE IN INCHES .XX = ±.0- .XXX = ±.00- .XXXX = ±.000- SURFACE FINISH <input checked="" type="checkbox"/>		NAME	DATE	Roberts Ranch Hoopouses	
DO NOT SCALE DRAWING	DRAWN	KEVIN ROBERTS	02/06/2021	TITLE	
BREAK ALL SHARP EDGES AND REMOVE BURRS	CHECKED			20' Wide Hoopouse Projected Views & BOM	
THIRD ANGLE PROJECTION	APPROVED			SIZE	REV. A
	MATERIAL	FINISH		A	DWG NO. H20-4
	Galvanized Steel			SCALE 1:100	WEIGHT
				SHEET	4 of 5

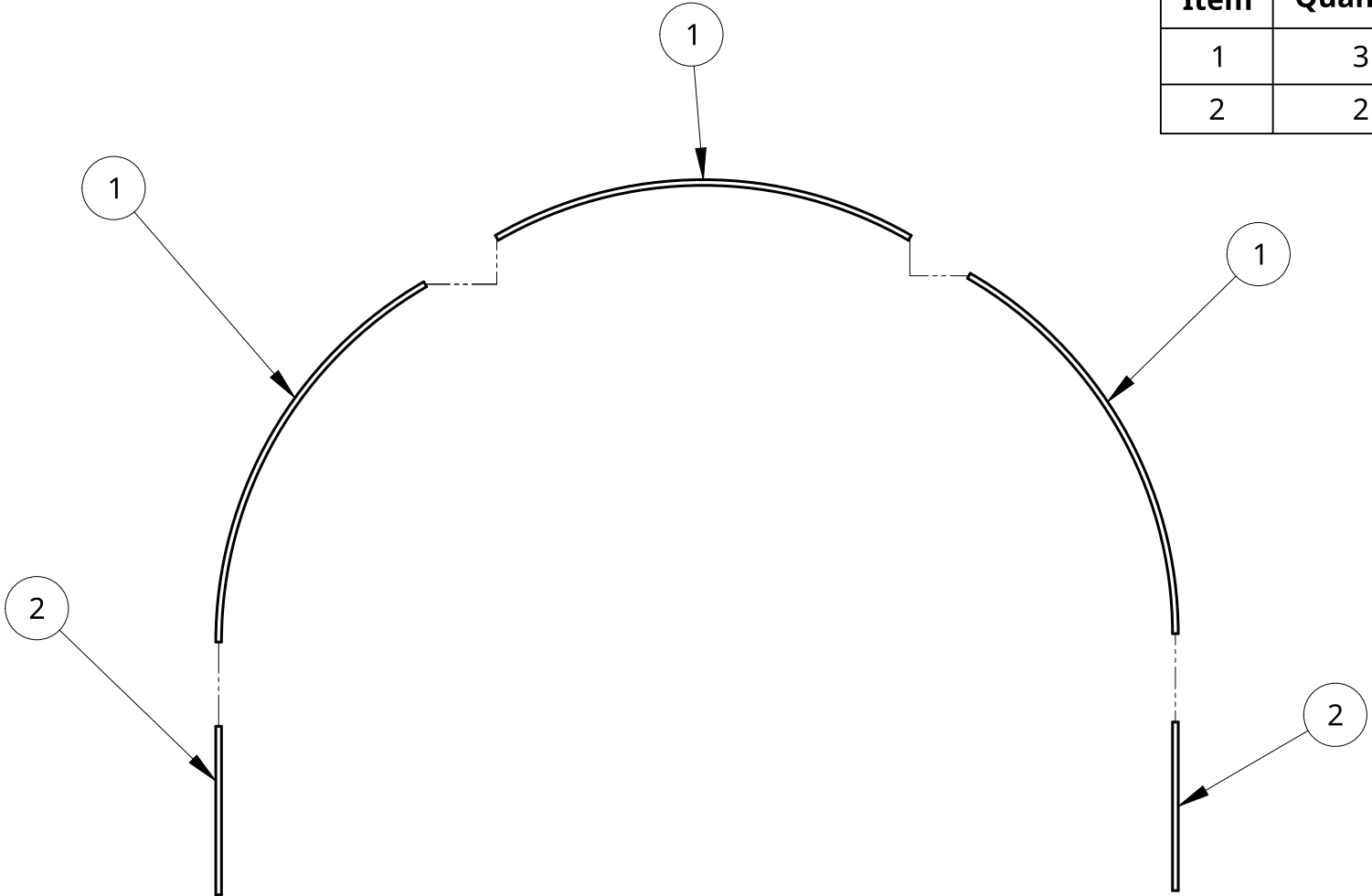
2

1

Item	Quantity	Description
1	3	1.375" x 10.5' Rib
2	2	1.625" x 4' Post

B

B



A

A

2

1

UNLESS OTHERWISE SPECIFIED, DIMENSIONS ARE IN INCHES .XX = ±.0- ANGULAR = ± ° .XXX = ±.00- FRACTIONAL = ± .XXXX = ±.000- SURFACE FINISH		NAME	DATE	Roberts Ranch Hoophouses			
	DRAWN	KEVIN ROBERTS	02/14/2021			TITLE	
	CHECKED			20' Wide Arch Assembly			
	APPROVED						
DO NOT SCALE DRAWING				A	H20-5		
BREAK ALL SHARP EDGES AND REMOVE BURRS				SCALE	WEIGHT	SHEET	
THIRD ANGLE PROJECTION	MATERIAL	FINISH		1:50		5 of 5	
	Galvanized Steel						