

BOM	
Item	Description
1	1.875" OD Peak
2	1.625" OD Truss
3	1.625" OD Arc
4	1.625" OD Post
5	2" x 2" Metal Framing
6	2'x2' Hot Air Vent
7	7'x7' Bay Door
8	1"x2" Roll-Up Board
9	Dual Bay Door Bottom Header
10	1.375" OD Purlin
11	1.875" OD Swedge Post

Wind Load - 65 MPH  
 Snow Load - 30 PSF

UNLESS OTHERWISE SPECIFIED, DIMENSIONS ARE IN INCHES .XX = ±.0- .XXX = ±.00- .XXXX = ±.000- SURFACE FINISH $\sqrt{\quad}$ DO NOT SCALE DRAWING BREAK ALL SHARP EDGES AND REMOVE BURRS THIRD ANGLE PROJECTION 	DRAWN	Rica Abing	DATE	08/29/2024
	CHECKED	Kevin Roberts	TITLE	Roberts Ranch Hoophouses
	APPROVED		20' Wide Gothic Hightunnel Front View	
	MATERIAL	Galvanized Steel	FINISH	
	SIZE		A	DWG NO.
SCALE		1:40	WEIGHT	
		SHEET	1 of 9	

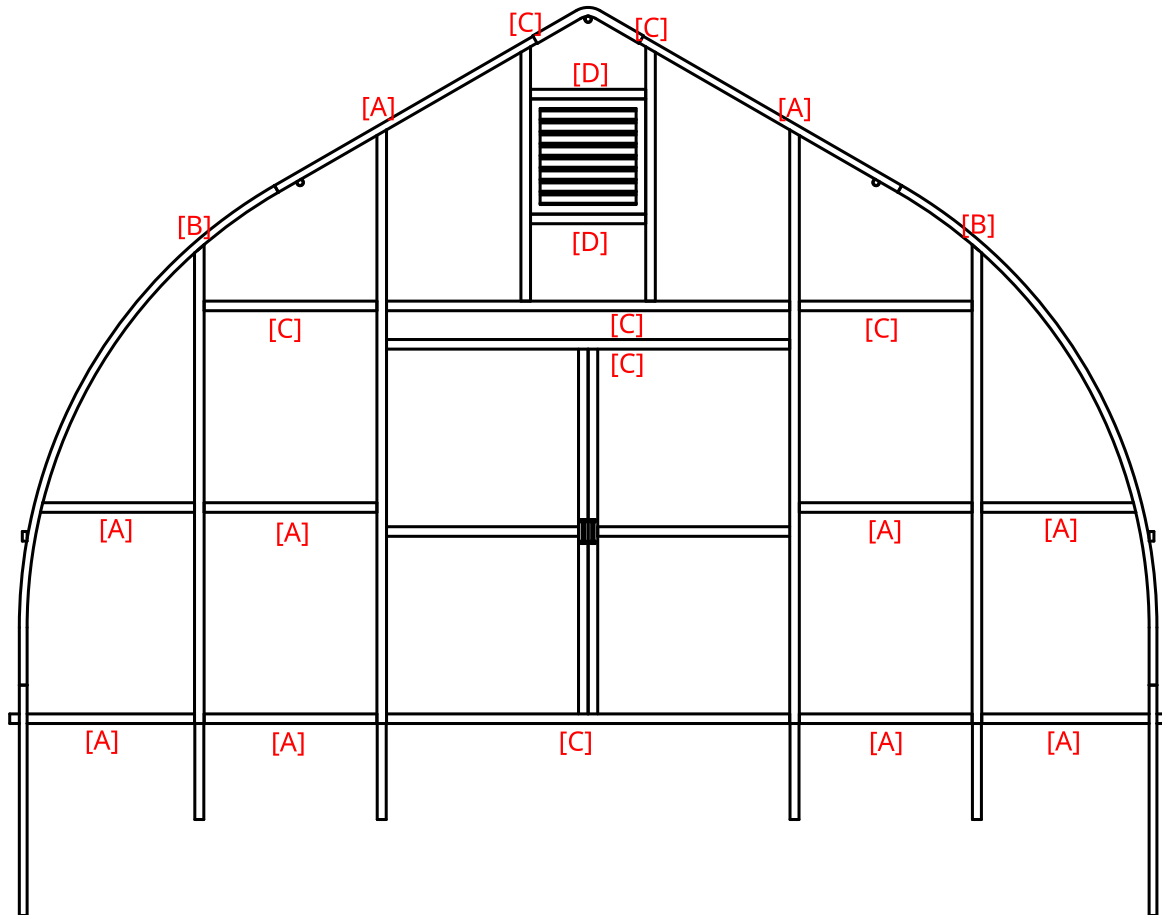
Roberts Ranch Hoophouses		
20' Wide Gothic Hightunnel Front View		
SIZE	DWG NO.	REV.
A	G20-1	C
SCALE	WEIGHT	SHEET
1:40		1 of 9

2

1

### Metal Framing Detail

Item	Description
A, B	2"x2" Vertical Stud
A, C	2"x2" Horizontal Stud
A, C	2"x2" Base Frame
C, D	2"x2" Air Vent Frame



B

B

A

A

Wind Load - 65 MPH  
Snow Load - 30 PSF

UNLESS OTHERWISE SPECIFIED,  
DIMENSIONS ARE IN INCHES

.XX = ±.0-  
.XXX = ±.00-  
.XXXX = ±.000-

ANGULAR = ± °  
FRACTIONAL = ±

SURFACE FINISH ✓

DO NOT SCALE DRAWING

BREAK ALL SHARP EDGES AND  
REMOVE BURRS

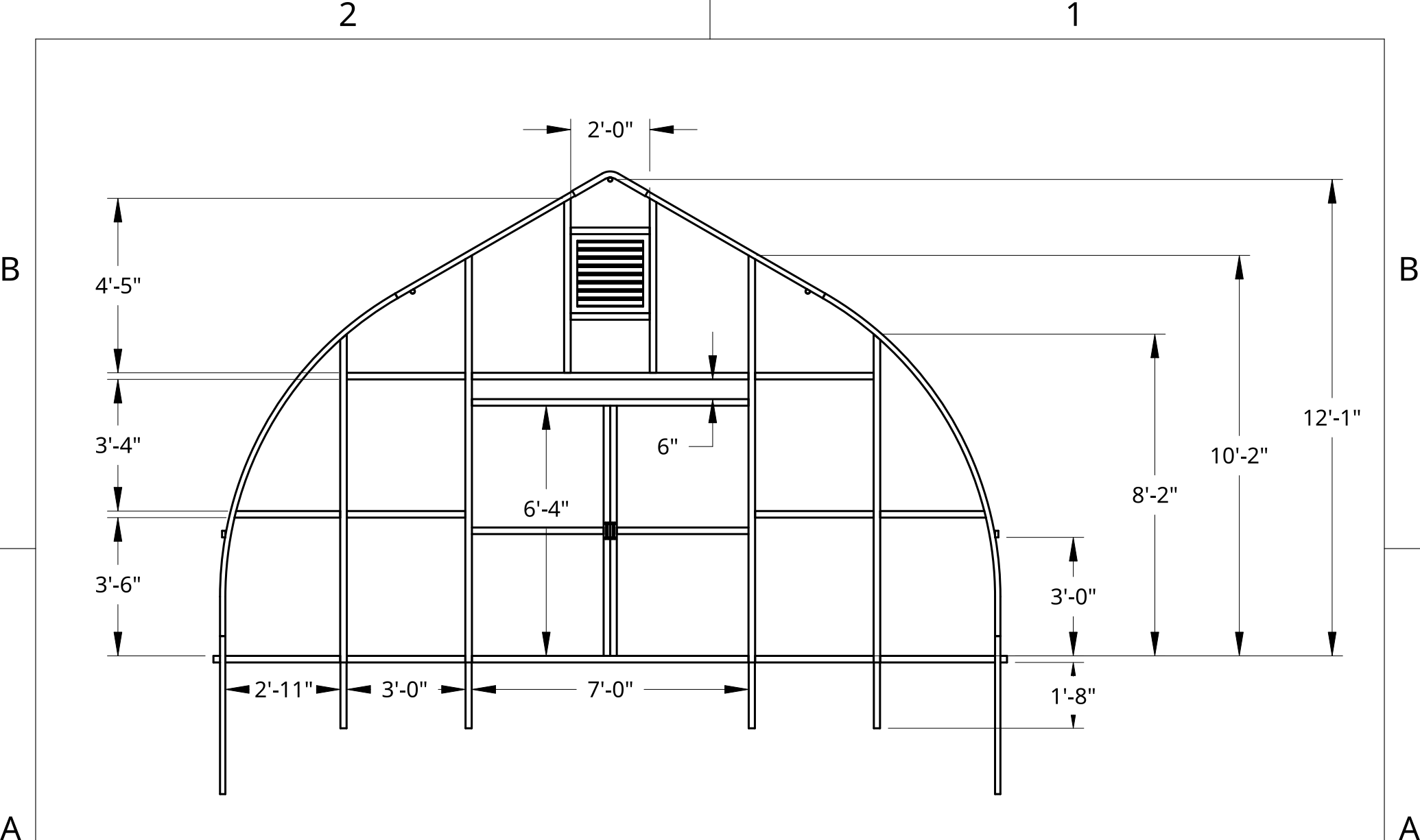
THIRD ANGLE PROJECTION

	NAME	DATE
DRAWN	Rica Abing	08/29/2024
CHECKED	Kevin Roberts	
APPROVED		
MATERIAL	Galvanized Steel	FINISH

Roberts Ranch Hoophouses			
TITLE 20' Wide Gothic Hightunnel Front View			
SIZE A	DWG NO. G20-2	REV. C	
SCALE 1:40	WEIGHT	SHEET 2 of 9	

2

1

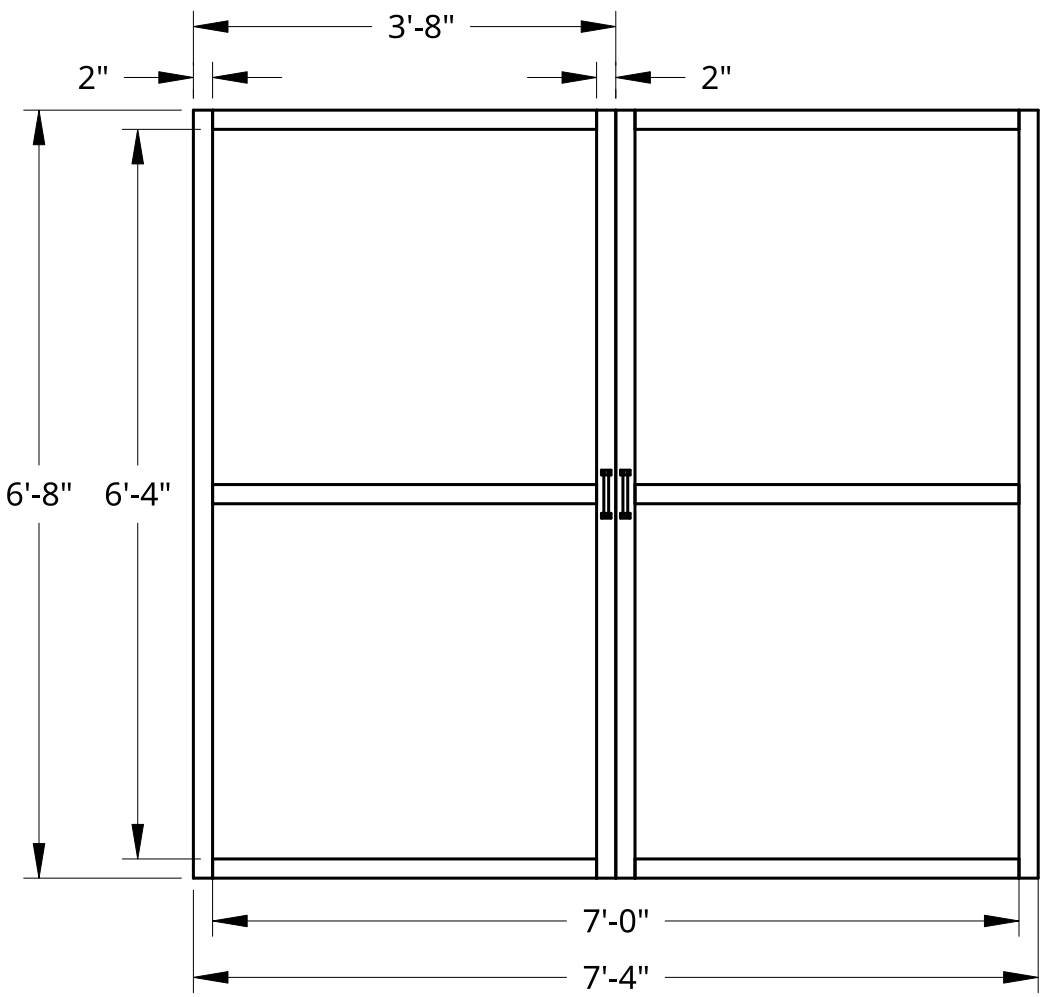


Wind Load - 65 MPH  
 Snow Load - 30 PSF

UNLESS OTHERWISE SPECIFIED, DIMENSIONS ARE IN INCHES .XX = ±.0- .XXX = ±.00- .XXXX = ±.000- SURFACE FINISH		NAME	DATE	Roberts Ranch Hoophouses	
DO NOT SCALE DRAWING	DRAWN	Rica Abing	08/29/2024	TITLE 20' Wide Gothic Hightunnel Dimensioned Front View	
BREAK ALL SHARP EDGES AND REMOVE BURRS	CHECKED	Kevin Roberts			
THIRD ANGLE PROJECTION	APPROVED				
	MATERIAL	FINISH		SIZE	DWG. NO.
	Galvanized Steel			A	G20-3
				SCALE	WEIGHT
				1:40	
				SHEET	REV.
				3 of 9	C

2

1



B

B

A

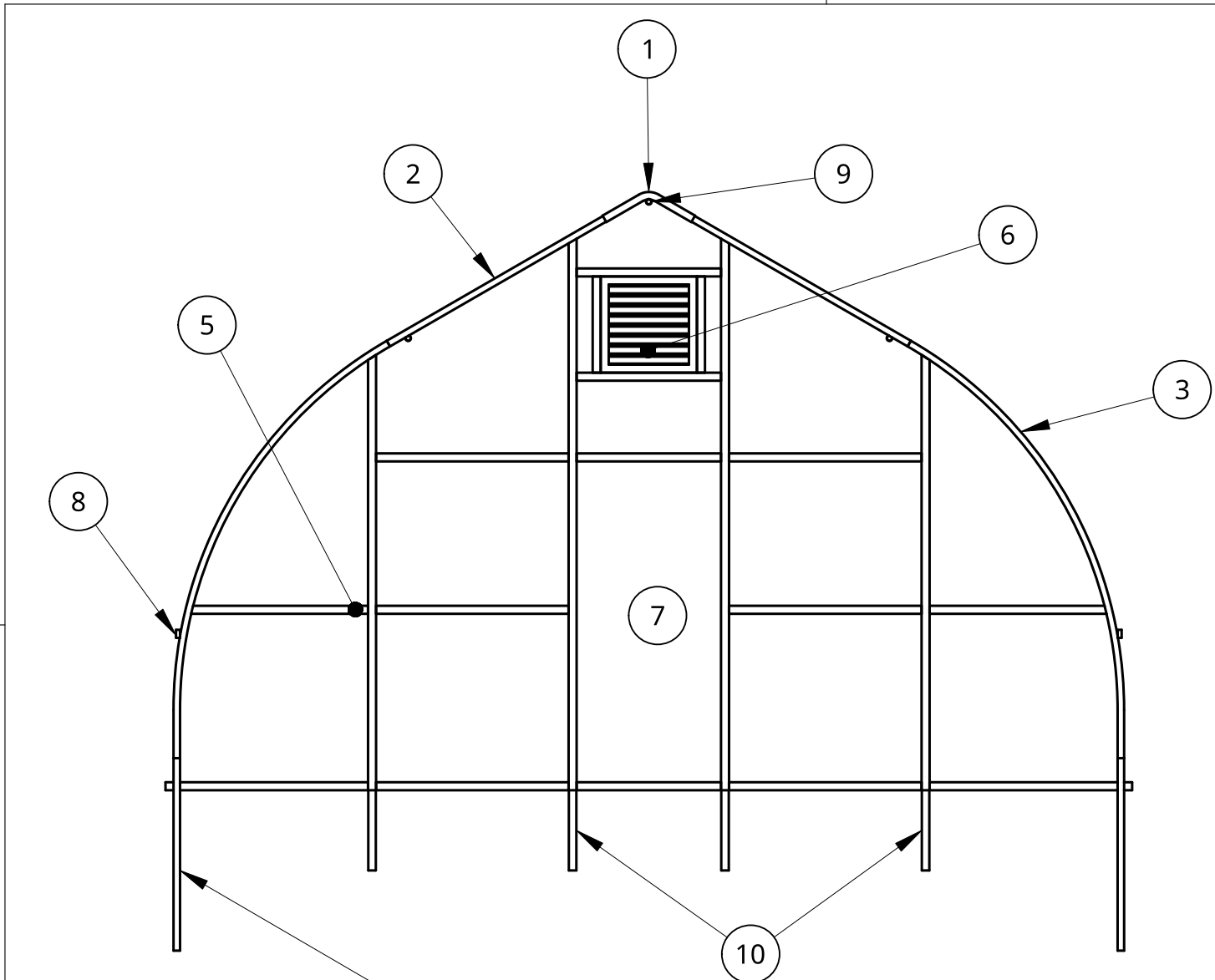
A

Wind Load - 65 MPH  
 Snow Load - 30 PSF

2

1

UNLESS OTHERWISE SPECIFIED, DIMENSIONS ARE IN INCHES .XX = ±.0- .XXX = ±.00- .XXXX = ±.000-		NAME	DATE	Roberts Ranch Hoophouses	
	DRAWN	RICA JANE ABING	08/07/2024	TITLE  7' x 7' Dual Bay Door Plan Details	
	CHECKED	Kevin Roberts			
	APPROVED				
SURFACE FINISH				SIZE	REV. <b>C</b>
DO NOT SCALE DRAWING				<b>A</b>	DWG NO. <b>G20-4</b>
BREAK ALL SHARP EDGES AND REMOVE BURRS				SCALE	WEIGHT
THIRD ANGLE PROJECTION		MATERIAL	FINISH	1:50	SHEET
		Galvanized Steel			4 of 9



BOM	
Item	Description
1	1.875" OD Peak
2	1.625" OD Truss
3	1.625" OD Arc
4	1.625" OD Post
5	2" x 2" Metal Framing
6	2'x2' Hot Air Vent
7	36"x80" Man Door
8	1"x2" Roll-Up Board
9	1.375" OD Purlin
10	1.875" OD Swedge Post

Wind Load - 65 MPH  
 Snow Load - 30 PSF

UNLESS OTHERWISE SPECIFIED, DIMENSIONS ARE IN INCHES .XX = ±.0- .XXX = ±.00- .XXXX = ±.000-		NAME	DATE
ANGULAR = ± ° FRACTIONAL = ±	DRAWN	Rica Abing	08/29/2024
SURFACE FINISH ✓	CHECKED	Kevin Roberts	
DO NOT SCALE DRAWING	APPROVED		
BREAK ALL SHARP EDGES AND REMOVE BURRS			
THIRD ANGLE PROJECTION	MATERIAL	FINISH	
	Galvanized Steel		

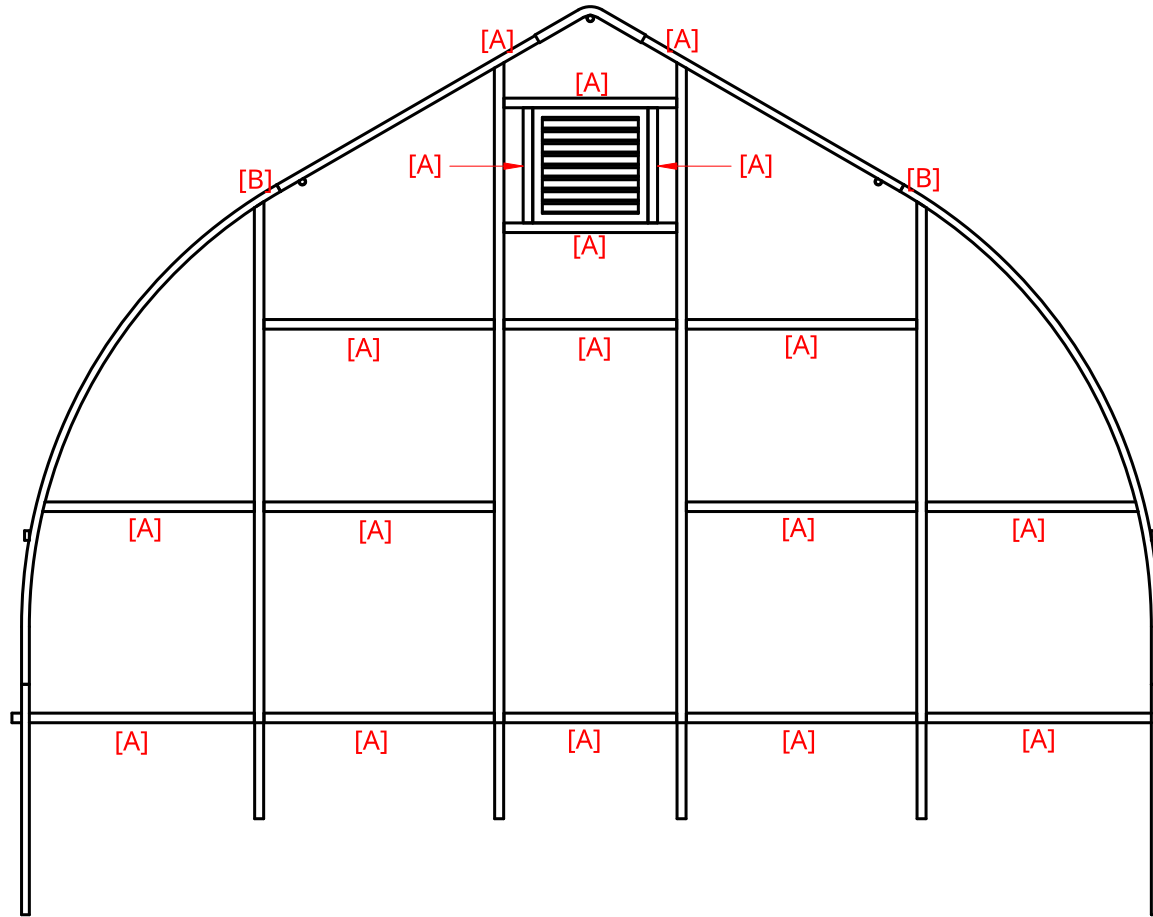
Roberts Ranch Hoophouses			
TITLE			
20' Wide Gothic Hightunnel Back View			
SIZE	DWG NO.	REV.	
A	G20-5	C	
SCALE	WEIGHT	SHEET	
1:40		5 of 9	

2

1

### Metal Framing Detail

Item	Description
A, B	2"x2" Vertical Stud
A	2"x2" Horizontal Stud
A	2"x2" Air Vent Frame
A	2"x2" Base Frame



B

B

A

A

Wind Load - 65 MPH  
 Snow Load - 30 PSF

UNLESS OTHERWISE SPECIFIED,  
 DIMENSIONS ARE IN INCHES  
 .XX = ±.0-  
 .XXX = ±.00-  
 .XXXX = ±.000-  
 ANGULAR = ± °  
 FRACTIONAL = ±

SURFACE FINISH

DO NOT SCALE DRAWING

BREAK ALL SHARP EDGES AND REMOVE BURRS

THIRD ANGLE PROJECTION

	NAME	DATE
DRAWN	Rica Abing	08/29/2024
CHECKED	Kevin Roberts	
APPROVED		
MATERIAL	Galvanized Steel	FINISH

Roberts Ranch Hoophouses		
TITLE 20' Wide Gothic Hightunnel Back View		
SIZE A	DWG NO. G20-6	REV. C
SCALE 1:40	WEIGHT	SHEET 6 of 9

2

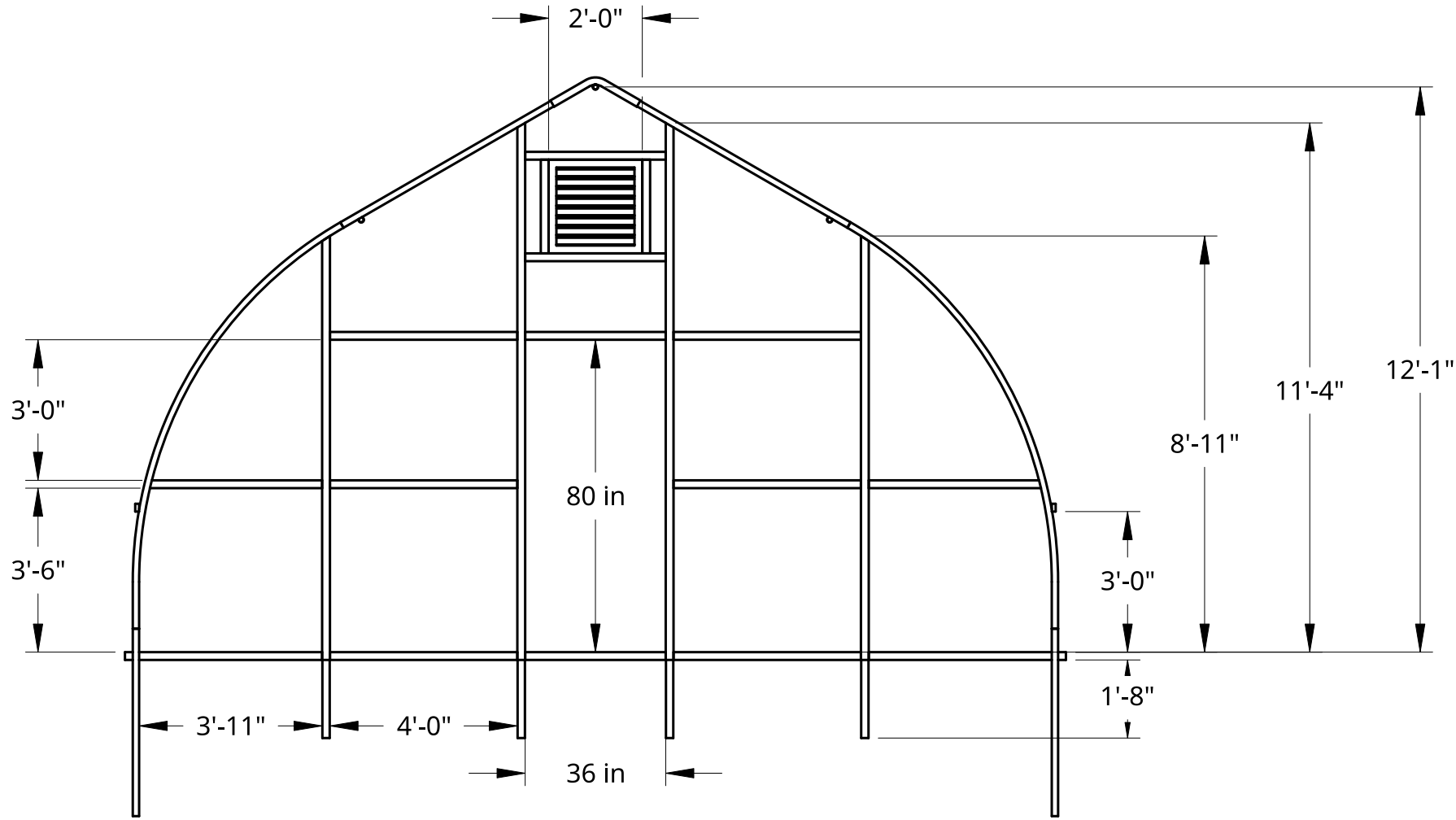
1

B

B

A

A

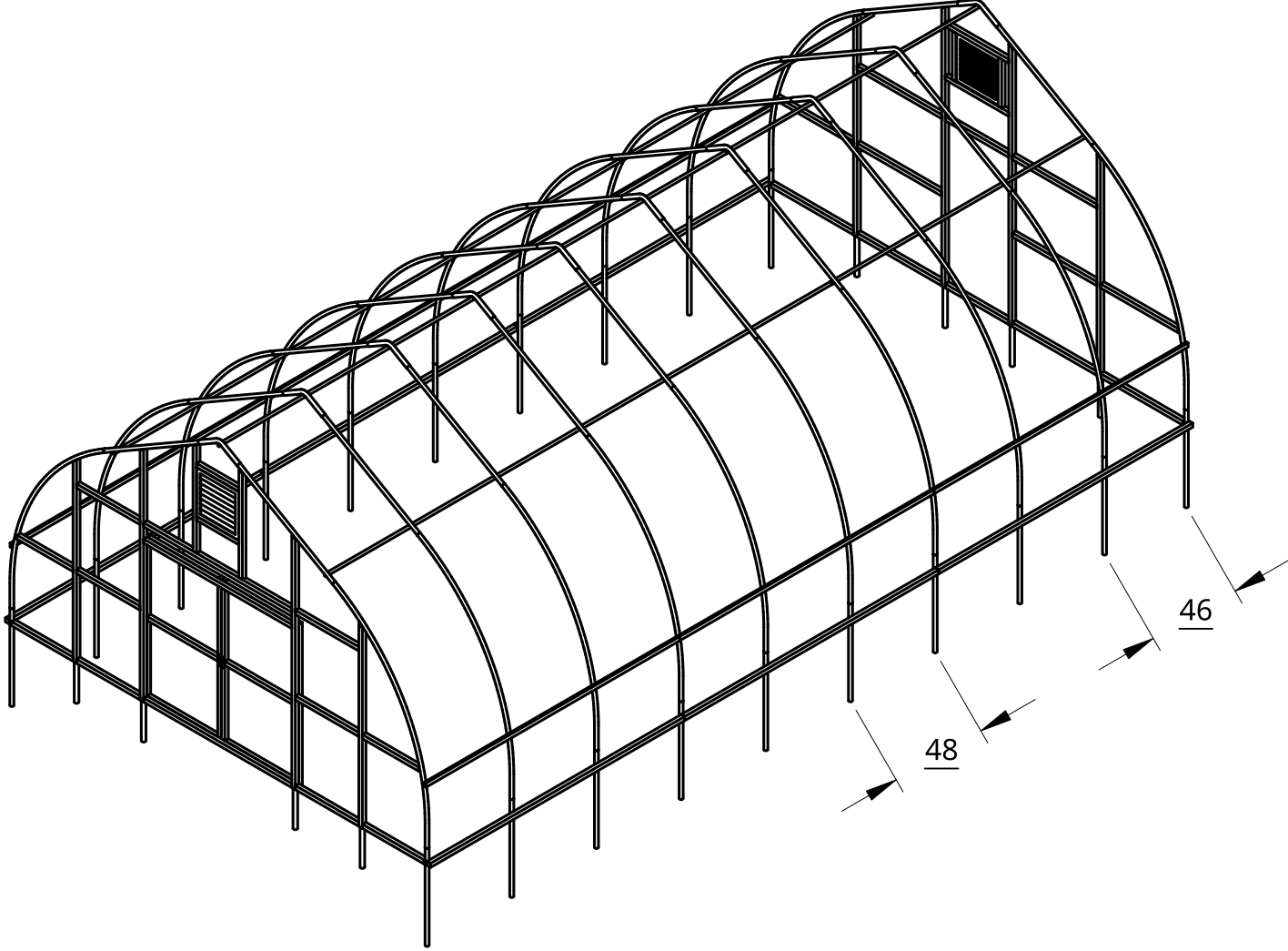


Wind Load - 65 MPH  
 Snow Load - 30 PSF

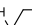

UNLESS OTHERWISE SPECIFIED, DIMENSIONS ARE IN INCHES .XX = ±.0- .XXX = ±.00- .XXXX = ±.000-		NAME	DATE	Roberts Ranch Hoophouses	
ANGULAR = ± ° FRACTIONAL = ±		DRAWN	Rica Abing	08/29/2024	TITLE  20' Wide Gothic Hightunnel Dimensioned Back View
SURFACE FINISH ✓		CHECKED	Kevin Roberts		
DO NOT SCALE DRAWING		APPROVED			
BREAK ALL SHARP EDGES AND REMOVE BURRS					SIZE <b>A</b>
THIRD ANGLE PROJECTION		MATERIAL	FINISH		DWG NO. <b>G20-7</b>
		Galvanized Steel			REV. <b>C</b>
		SCALE	1:40	WEIGHT	SHEET 7 of 9

2

1



Wind Load - 65 MPH  
 Snow Load - 30 PSF

UNLESS OTHERWISE SPECIFIED, DIMENSIONS ARE IN INCHES .XX = ±.0- .XXX = ±.00- .XXXX = ±.000- SURFACE FINISH 		NAME	DATE	Roberts Ranch Hoophouses	
DO NOT SCALE DRAWING		DRAWN	Rica Abing	08/29/2024	TITLE 20' Wide Gothic Hightunnel Isometric View
BREAK ALL SHARP EDGES AND REMOVE BURRS		CHECKED	Kevin Roberts		
THIRD ANGLE PROJECTION 		APPROVED			
		MATERIAL	FINISH		SIZE <b>A</b>
		Galvanized Steel			DWG NO. <b>G20-8</b>
				SCALE 1:70	REV. <b>C</b>
				WEIGHT	SHEET 8 of 9



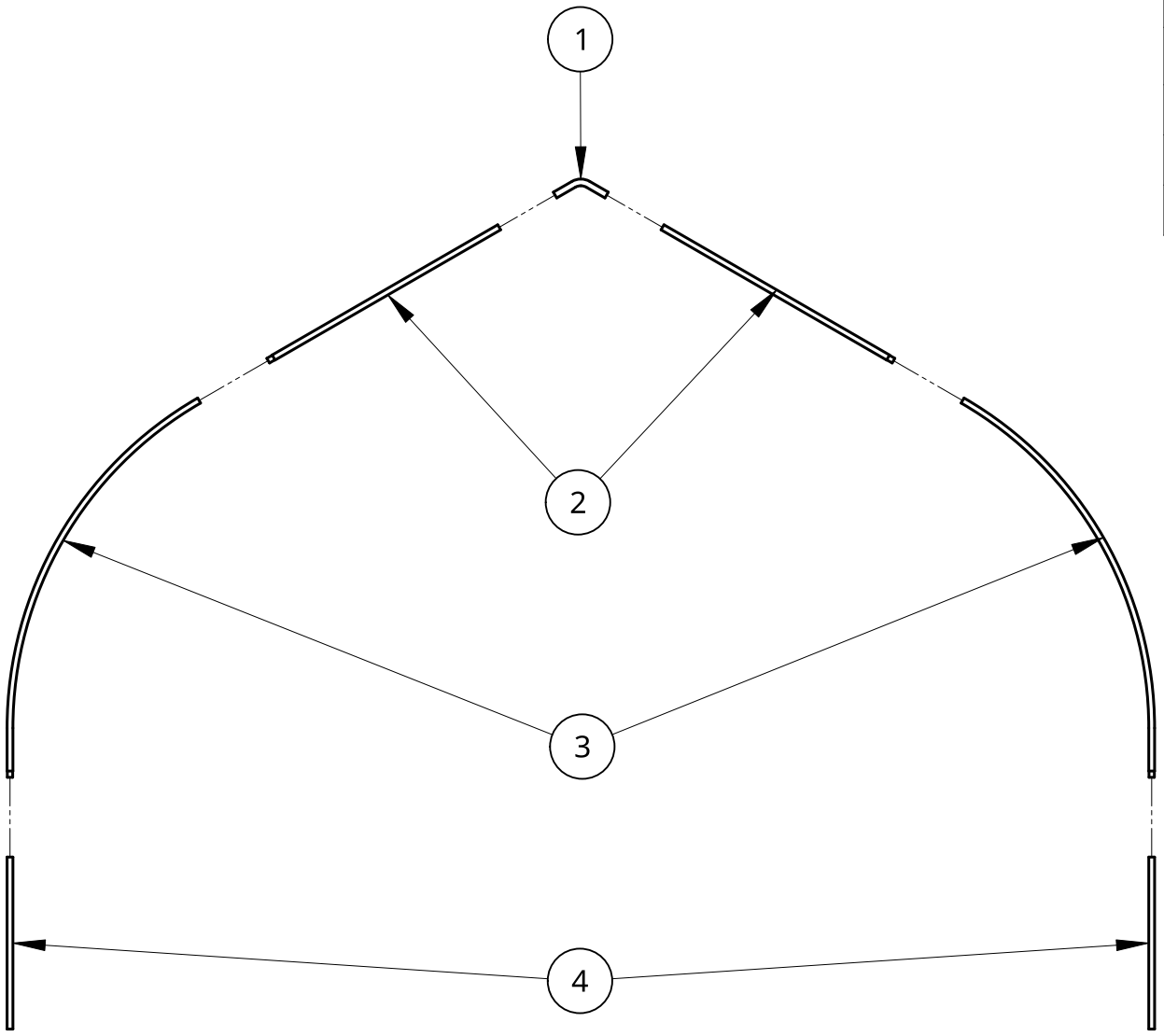
2

1

Item	Quantity	Description
1	1	1.875" OD Peak
2	2	1.625" OD Truss
3	2	1.625" OD Arc
4	2	1.625" OD Post

B

B



A

A

Wind Load - 65 MPH  
 Snow Load - 30 PSF

UNLESS OTHERWISE SPECIFIED, DIMENSIONS ARE IN INCHES .XX = ±.0- .XXX = ±.00- .XXXX = ±.000-		NAME	DATE	Roberts Ranch Hoophouses	
DRAWN	RICA JANE ABING	06/29/2024	TITLE		
CHECKED			20' Wide Gothic Hightunnel Arch Exploded View		
APPROVED	E. Roberts	3/8/2024	SIZE	DWG NO.	REV.
DO NOT SCALE DRAWING			A	G20-9	C
BREAK ALL SHARP EDGES AND REMOVE BURRS			SCALE	WEIGHT	SHEET
THIRD ANGLE PROJECTION	MATERIAL	FINISH	1:50		9 of 9
	Galvanized Steel				

2

1