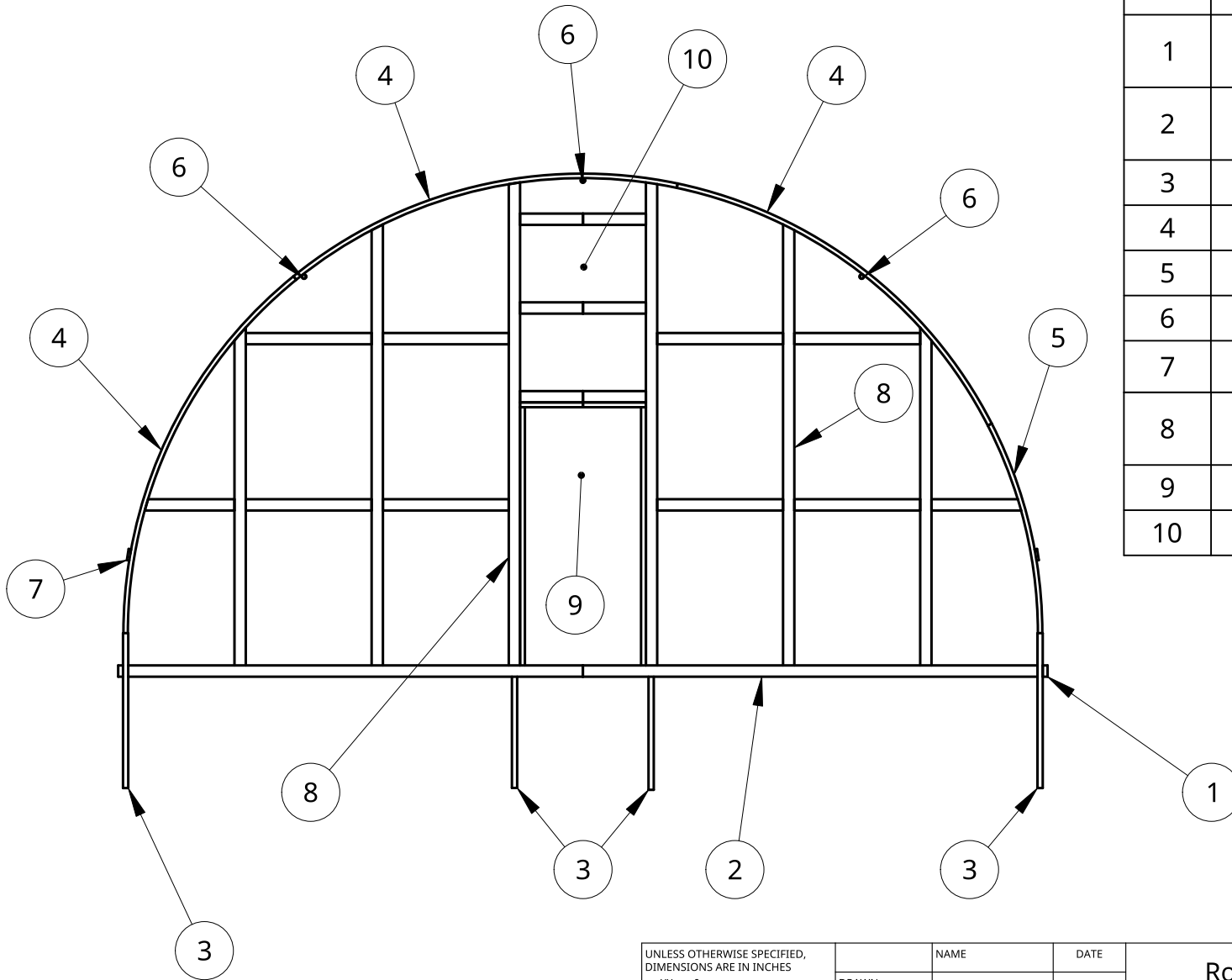


2

1

Item	Quantity	Description
1	6	2x4 Pressure Treated Wood
2	4	2x4 Pressure Treated Wood
3	24	1.625"x4' Post
4	30	1.375"x10.5' Rib
5	10	1.375"x3.3' Rib
6	9	1.375" OD Purlin
7	6	1x4 Roll-up Board
8	25	Framing - Wood 2x4s
9	2	36"x80" Door
10	2	Vent



B

B

A

A

Wind Load - 65 MPH  
 Snow Load - 30 PSF

UNLESS OTHERWISE SPECIFIED,  
 DIMENSIONS ARE IN INCHES

.XX = ±.0-  
 .XXX = ±.00-  
 .XXXX = ±.000-

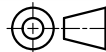
ANGULAR = ± °  
 FRACTIONAL = ±

SURFACE FINISH

DO NOT SCALE DRAWING

BREAK ALL SHARP EDGES AND  
 REMOVE BURRS

THIRD ANGLE PROJECTION



	NAME	DATE
DRAWN	KEVIN ROBERTS	01/24/2021
CHECKED		
APPROVED		

MATERIAL	FINISH
Galvanized Steel	

Roberts Ranch Hoopouses

TITLE  
 24' Wide Hoopouse  
 End View & BOM

SIZE	DWG NO.	REV
A	H24-1	B
SCALE 1:50	WEIGHT	SHEET 1 of 5

2

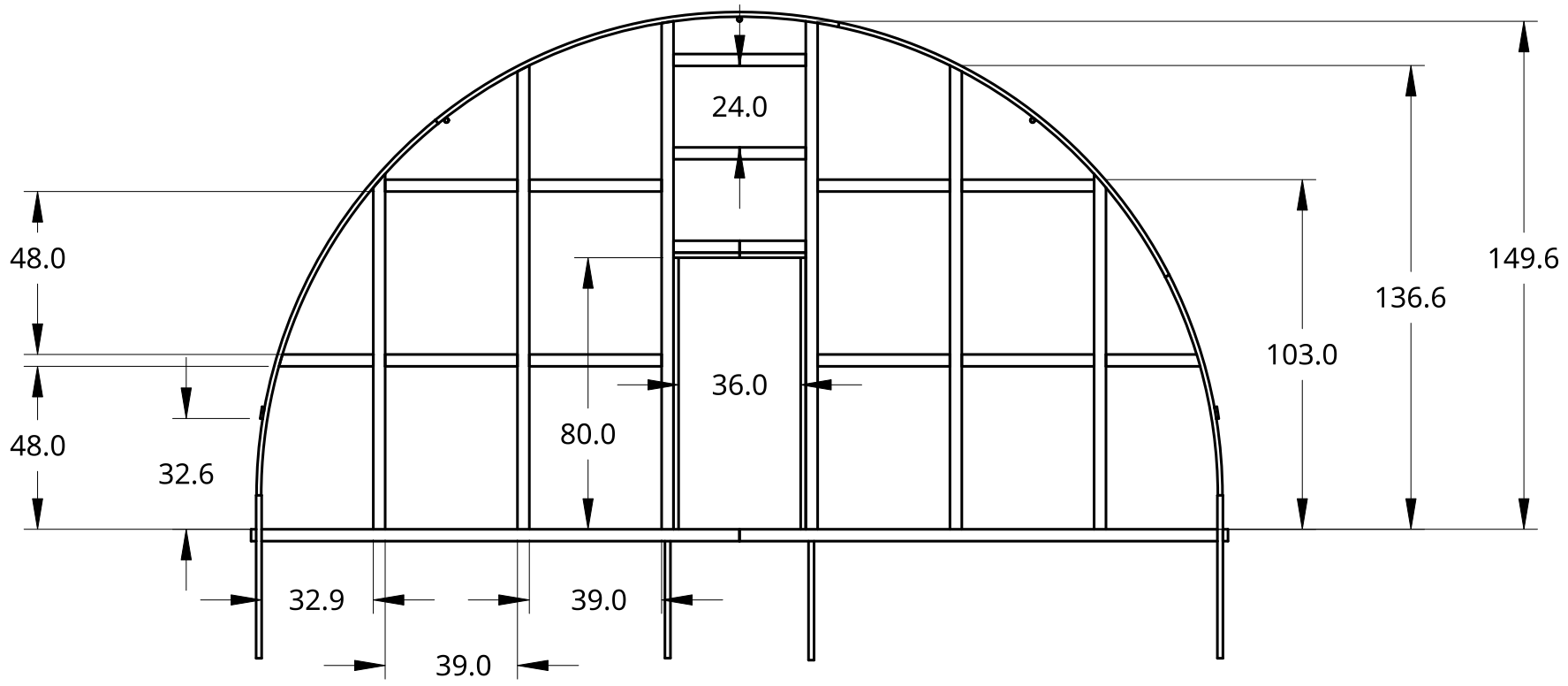
1

2

1

B

B



A

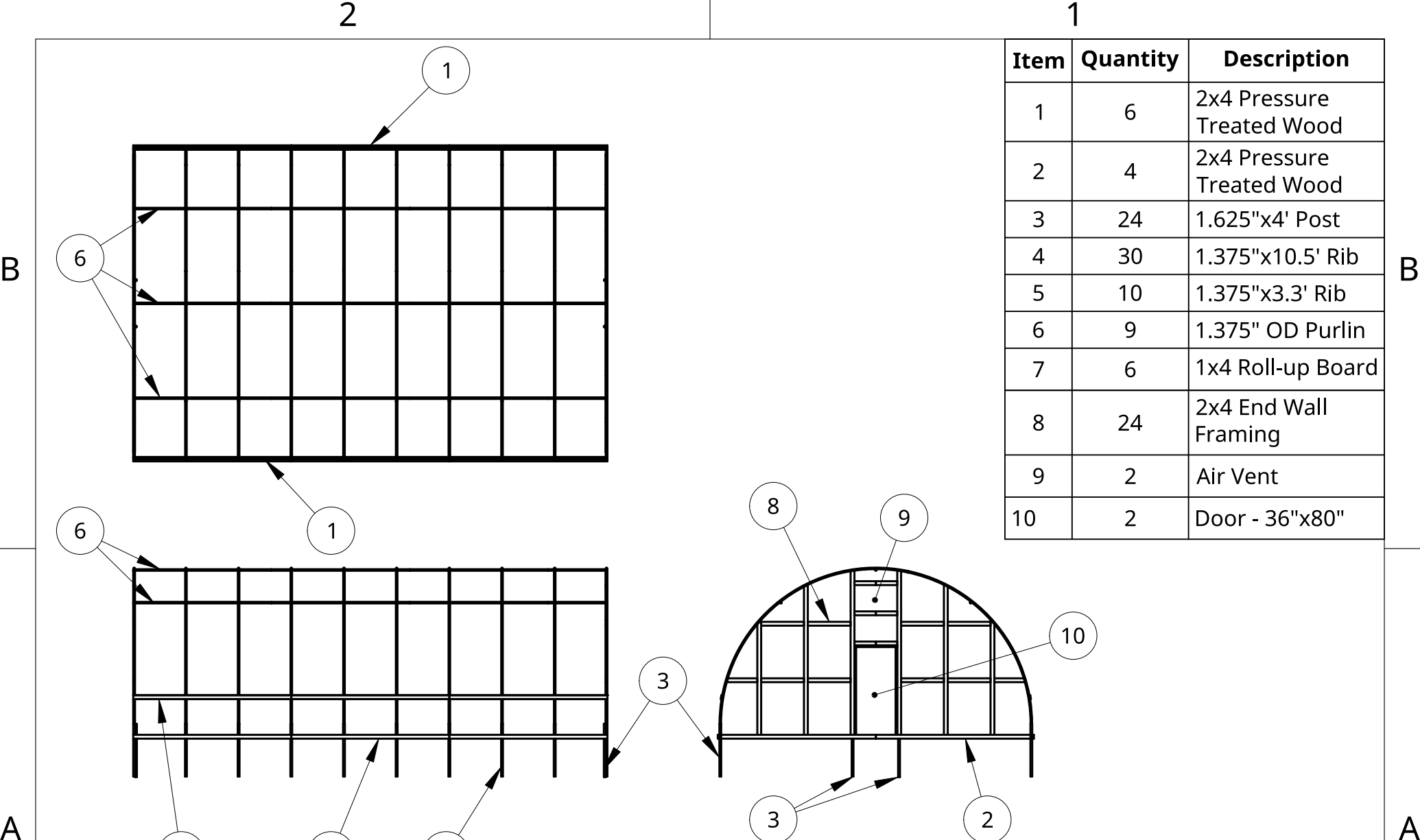
A

Wind Load - 65 MPH  
 Snow Load - 30 PSF

UNLESS OTHERWISE SPECIFIED, DIMENSIONS ARE IN INCHES .XX = ±.0- .XXX = ±.00- .XXXX = ±.000- SURFACE FINISH		NAME	DATE	Roberts Ranch Hoopouses	
DO NOT SCALE DRAWING	DRAWN	KEVIN ROBERTS	01/24/2021	TITLE	
BREAK ALL SHARP EDGES AND REMOVE BURRS	CHECKED			24' Wide Hoopouse Dimensioned End View	
THIRD ANGLE PROJECTION	APPROVED			SIZE	REV
	MATERIAL	FINISH		A	B
	Galvanized Steel			DWG NO.	H24-2
				SCALE	2 of 5
				1:50	
				WEIGHT	
				SHEET	

2

1



Item	Quantity	Description
1	6	2x4 Pressure Treated Wood
2	4	2x4 Pressure Treated Wood
3	24	1.625"x4' Post
4	30	1.375"x10.5' Rib
5	10	1.375"x3.3' Rib
6	9	1.375" OD Purlin
7	6	1x4 Roll-up Board
8	24	2x4 End Wall Framing
9	2	Air Vent
10	2	Door - 36"x80"

Wind Load - 65 MPH  
 Snow Load - 30 PSF

UNLESS OTHERWISE SPECIFIED, DIMENSIONS ARE IN INCHES .XX = ±.0- .XXX = ±.00- .XXXX = ±.000- SURFACE FINISH <input checked="" type="checkbox"/>		NAME KEVIN ROBERTS	DATE 01/24/2021	Roberts Ranch Hoophouses	
DO NOT SCALE DRAWING	DRAWN	CHECKED	APPROVED	TITLE 24' Wide Hoophouse Projected Views & BOM	
BREAK ALL SHARP EDGES AND REMOVE BURRS	MATERIAL Galvanized Steel	FINISH		SIZE A	DWG NO. H24-3
THIRD ANGLE PROJECTION			SCALE 1:120	WEIGHT	SHEET 3 of 5
				REV B	

B

B

A

A

2

1

2

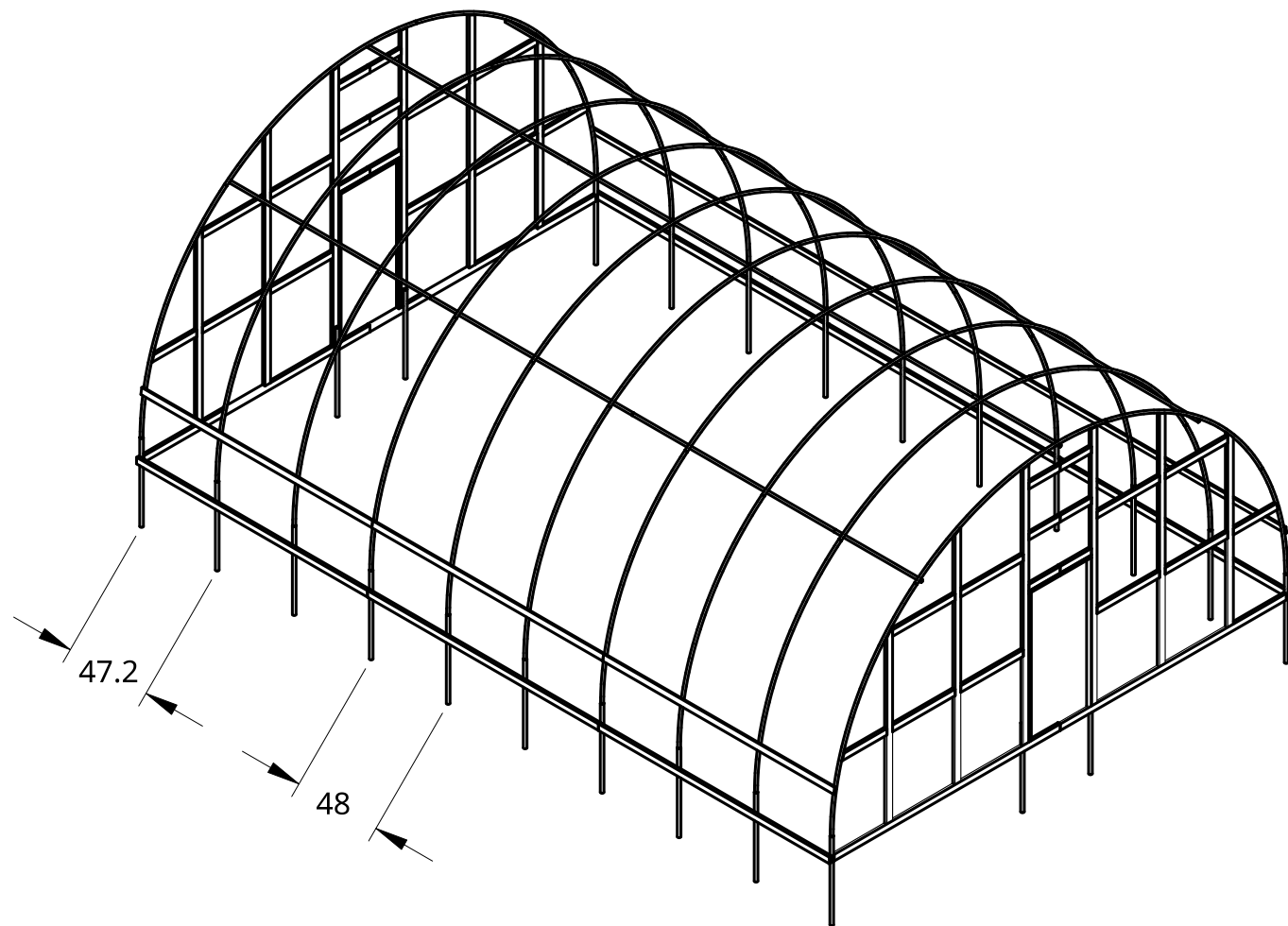
1

B

B

A

A



Wind Load - 65 MPH  
 Snow Load - 30 PSF

UNLESS OTHERWISE SPECIFIED, DIMENSIONS ARE IN INCHES .XX = ±.0- .XXX = ±.00- .XXXX = ±.000- SURFACE FINISH		NAME	DATE	Roberts Ranch Hoophouses	
DO NOT SCALE DRAWING	DRAWN	KEVIN ROBERTS	01/24/2021	TITLE	
BREAK ALL SHARP EDGES AND REMOVE BURRS	CHECKED			24' Wide Hoophouse Isometric View	
THIRD ANGLE PROJECTION	APPROVED			SIZE	REV
	MATERIAL	FINISH		A	B
	Galvanized Steel			DWG NO.	H24-4
				SCALE	1:80
				WEIGHT	
				SHEET	4 of 5

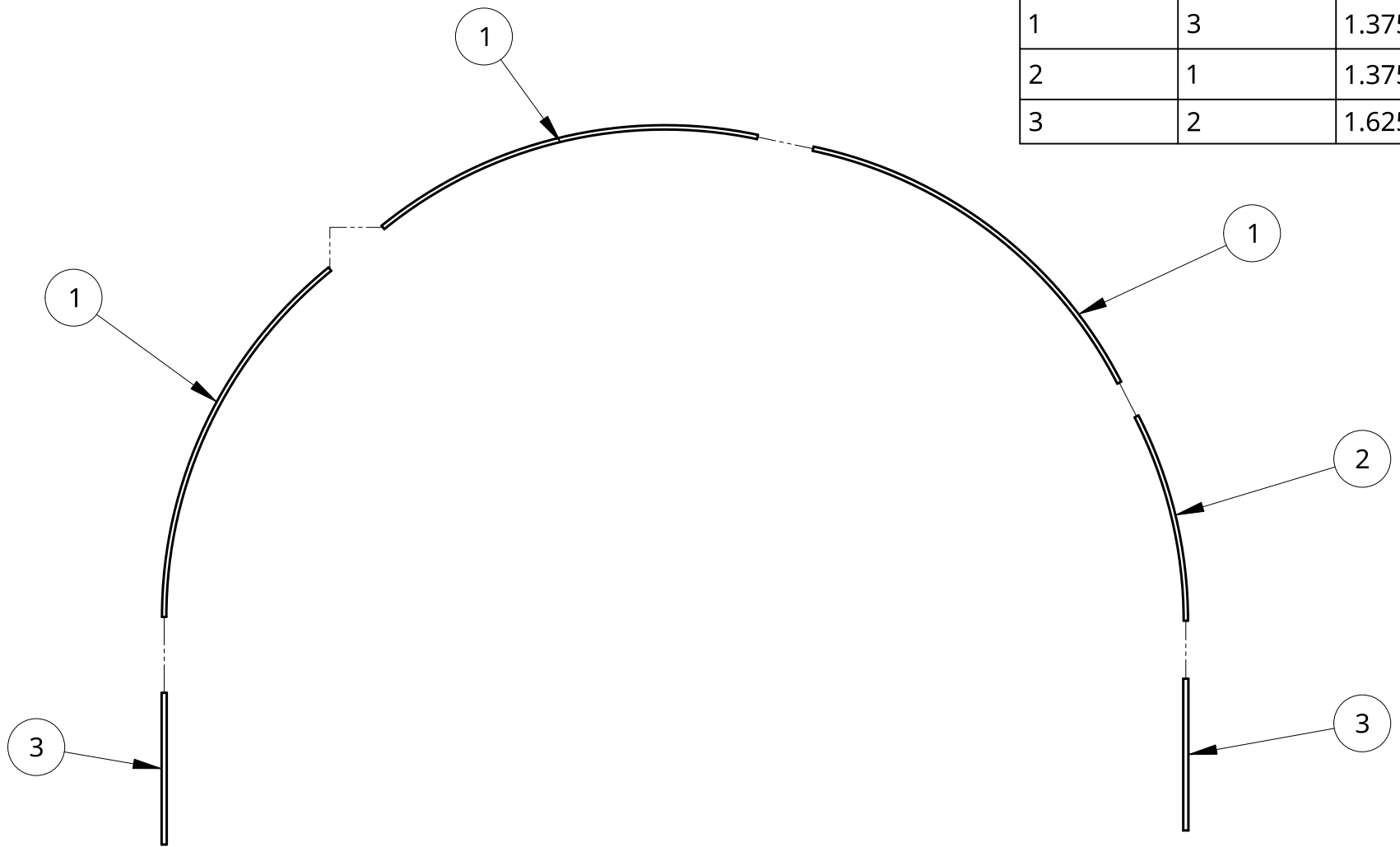
2

1

2

1

Item	Quantity	Description
1	3	1.375"x10.5' Rib
2	1	1.375"x3.3' Rib
3	2	1.625"x4' Post



UNLESS OTHERWISE SPECIFIED, DIMENSIONS ARE IN INCHES .XX = ±.0-      ANGULAR = ± ° .XXX = ±.00-      FRACTIONAL = ± .XXXX = ±.000- SURFACE FINISH	DRAWN	KEVIN ROBERTS	DATE	01/24/2021	Roberts Ranch Hoophouses					
	CHECKED						24W Arch Assembly			
	APPROVED				SIZE	A				
	DO NOT SCALE DRAWING	MATERIAL		FINISH		DWG NO.	H24-5	REV	B	
BREAK ALL SHARP EDGES AND REMOVE BURRS	Galvanized Steel				SCALE	1:50	WEIGHT		SHEET	5 of 5
THIRD ANGLE PROJECTION										